



Division 4

BUCKLE UP Kids in Cars



**Young Children
PRIORITY ONE**

Child Passengers and Air Bags

Introduction

While airbags provide safety benefits to adults, improperly or unbuckled children can be killed or seriously injured when they sit too close to the air bag.

NEVER place a rear-facing infant in front of a passenger air bag.

- This label is required to be on all rear-facing child safety seats.
- Children ages 12 and under should sit properly restrained in the back seat.

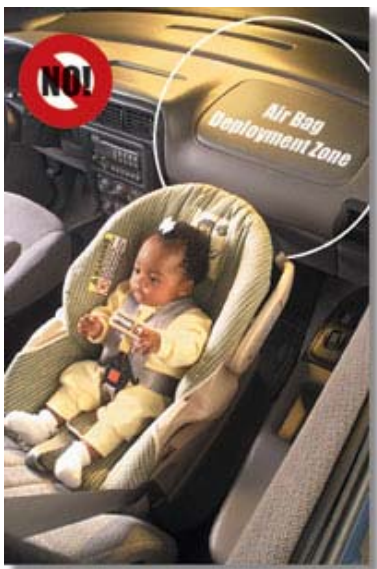
Air bags can cause serious injury or death to children, especially infants in rear-facing child seats.

How to know if your vehicle has a frontal air bag or side air bag system.

The letters "SRS, IRS, SIR, SIPS, SIAB, IC, or the words "Air Bag" may be embossed on the cover of the storage compartment. Later model cars may also have a warning label on the visor, edge of vehicle door, seat belt, and/or seat. Read vehicle's owner manual. In some vehicles there may be no obvious indicator on the dashboard.

Transporting your child in the front seat

If you must transport a child in the front seat of a vehicle with an active air bag, you may want to install an on-off switch. For more air bag information visit the NHTSA website www.nhtsa.dot.gov



Serving the
Children
of the World

